

THE
IM-CD1/CDJ
MECHANISM
OPERATION MANUAL

FOR SERVICE CALL
1-800-795-8251

YOUR MECHANISM SERIAL # IS _____

E-PROM # IS _____

Manufactured by: Technik Mfg. Inc.
1005 17th Street
Columbus, NE 68601

The IM-CD1 Mechanism

SET UP AND OPERATION MANUAL

TABLE OF CONTENTS

SAFETY CONSIDERATIONS	2
UNPACKING	2
MECHANISM MOUNTING	3
CARD THICKNESS ADJUSTMENT	4
LOADING CDs	4
SERIAL CONTROL BOARD	4, 5, 6
65 WATT POWER SUPPLY HOOK-UP	7
REGULAR MAINTENANCE	8
SERVICE LOG SHEET	10

SAFETY CONSIDERATIONS

Unplug the mechanism when servicing – failure to do this could cause serious injury.

UNPACKING

When the mechanism is received, it should be carefully unpacked and checked closely for any possible damage. If a freight company is involved and there is damage, please notify them immediately. They will need to thoroughly inspect the damage and fill out a report. Please **do not** touch the mechanism until this has been done.

Please remove and save packing materials for later use.

STANDARD MACHINE PACKING LIST

<u>QUANTITY</u>	<u>DESCRIPTION</u>
1	Mechanism
1	Hex key (side of mechanism)
1	Card weight
1	Warranty certificate
1	Operation Manual

OPTIONAL EQUIPMENT

DOCC Board – this board is used to control the mechanism using a parallel interface (switch closure or bill acceptor pulse).

Mag Board – this board is used to control the mechanism using a serial interface.

Power supply with harnesses – the power supply will plug directly into the mechanism to supply DC power (+5 and +12-15).

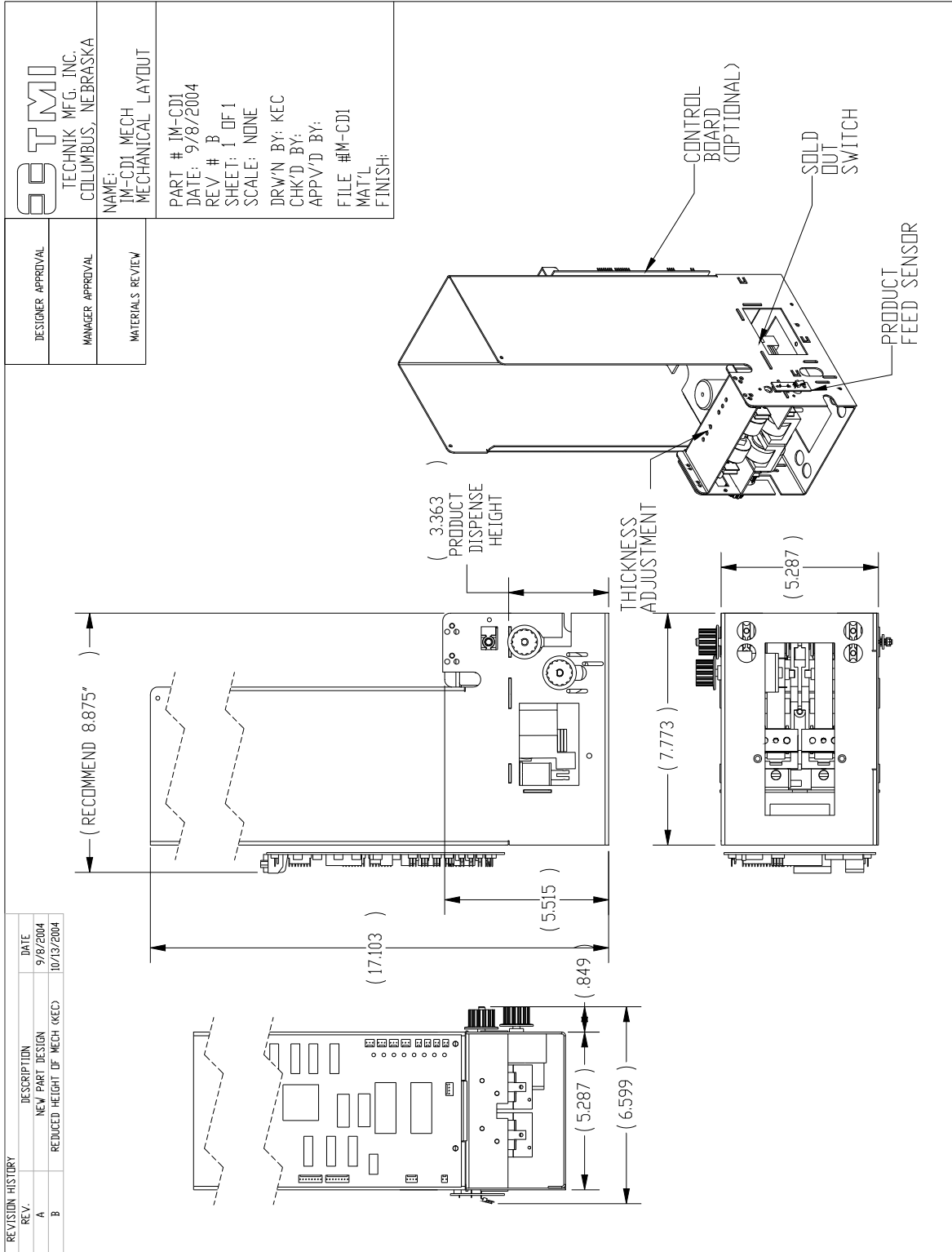
Mech Evaluation Kit

USB Cable

DB9 Cable

Other _____

MECHANISM MOUNTING



CARD THICKNESS ADJUSTMENT PROCEDURE

CARD ADJUSTMENT

1. With the hex head wrench supplied, turn the adjustment screw on the dispensing mechanism counter-clockwise until a CD will not pass the adjustment mechanism.
2. Place a single CD in the bottom of the column you wish to adjust. To make a
3. Place the weight on top of the CD.

BEFORE GOING ANY FURTHER, READ THE INSTRUCTIONS BELOW!!!

4. Place the hex head wrench into the adjustment screw.
5. Try to dispense a CD and turn the adjustment screw clockwise until a CD is dispensed. It may take a few tries before a CD is dispensed.
6. Once a CD is dispensed, the column is properly adjusted.

LOADING CDs

You are now ready to start loading your CDs. Once the CDs are in place, place a weight on top of the stack.

Mag Board (serial interface)

The serial board is equipped with a series of LEDs which may be used to troubleshoot this mechanism. The LEDs visually indicate when an input is actuated. A description of the LEDs and their corresponding inputs are described on the board wiring diagram below.

The serial command information is located in the "CM Card dispenser interface specification" manual. Please contact Technik for a copy of this manual.

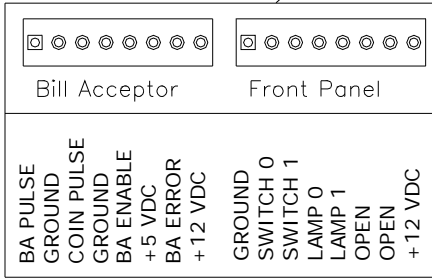
Power requirements:

+5VDC – 0.25A

+15VDC – 1.25A

REVISION HISTORY:
 (B) CHANGED CONNECTOR STYLE AT POWER CONNECTION (KEC 9-10-05)

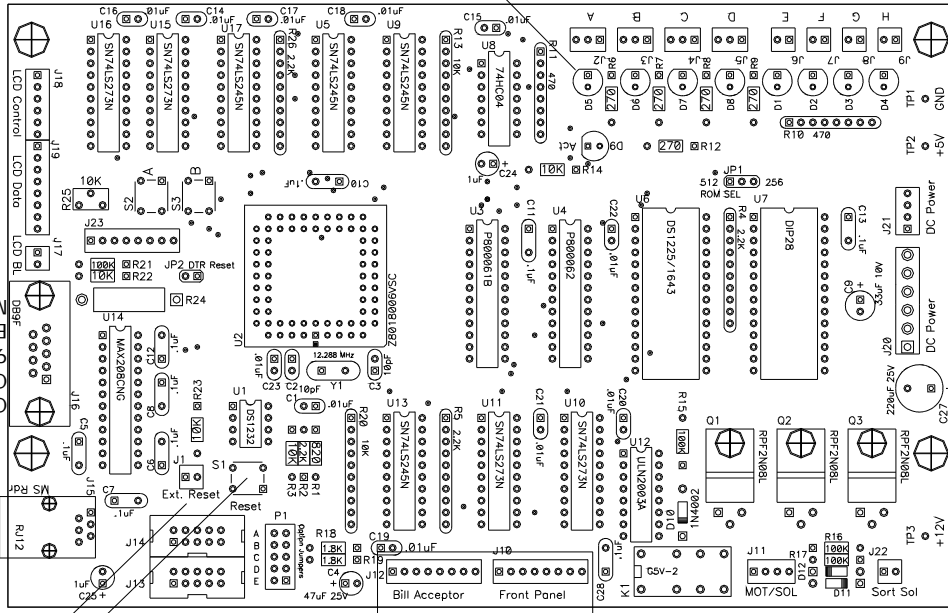
HARD RESET SWITCH
 HARD RESET BUTTON



TO CARD READ DEVICE

COMMUNICATION CONNECTION
 9-PIN (DB9) BOARD HAS MALE CONNECT

IM-1 BARCODE/B CONTROL WIRING DIAGRAM



LED DESCRIPTION:
 D1 - CARDS SOLD OUT SWITCH
 D2 - CARD GATE SWITCH
 D3 - OPEN
 D4 - OPEN
 D5 - CARD DISPENSE SENSOR
 D6 - CARD READ SENSOR
 D7 - CARD STAGED SENSOR
 D8 - CARD LEVEL SENSOR (IF USED)
 D9 - ERROR CODE LED

CARD DISPENSE SENSOR (FS1)

CARDS SOLD OUT SWITCH (SOS)
 CARD GATE SWITCH (VGS)

TYPE #5
 TO POWER SUPPLY

TO MOTOR
 TO CARD VEND SOLENOID

TO SORT SOLENOID



NAME: IM-1XXXB CONTROL BOARD WIRING DIA.
 PART # 110-022
 DATE: 10/22/2002
 REV # A
 SHEET: 1 OF
 SCALE: NONE
 DRW'N BY: KEC
 CHK'D BY:
 APP'V'D BY:
 FILE #
 MAT'L
 FINISH:

ID #	MFG	PN	DESCRIPTION
1	MOLEX	22-01-3027	2-CIR -100"
2	MOLEX	22-01-3037	3-CIR -100"
3	MOLEX	22-01-3047	4-CIR -100"
4	MOLEX	22-01-3067	6-CIR -100"
5	MOLEX	08-50-3061	6-CIR -156"
6	MOLEX	08-50-0113	100" TERMINAL
7	MOLEX	08-52-0072	156" TERMINAL

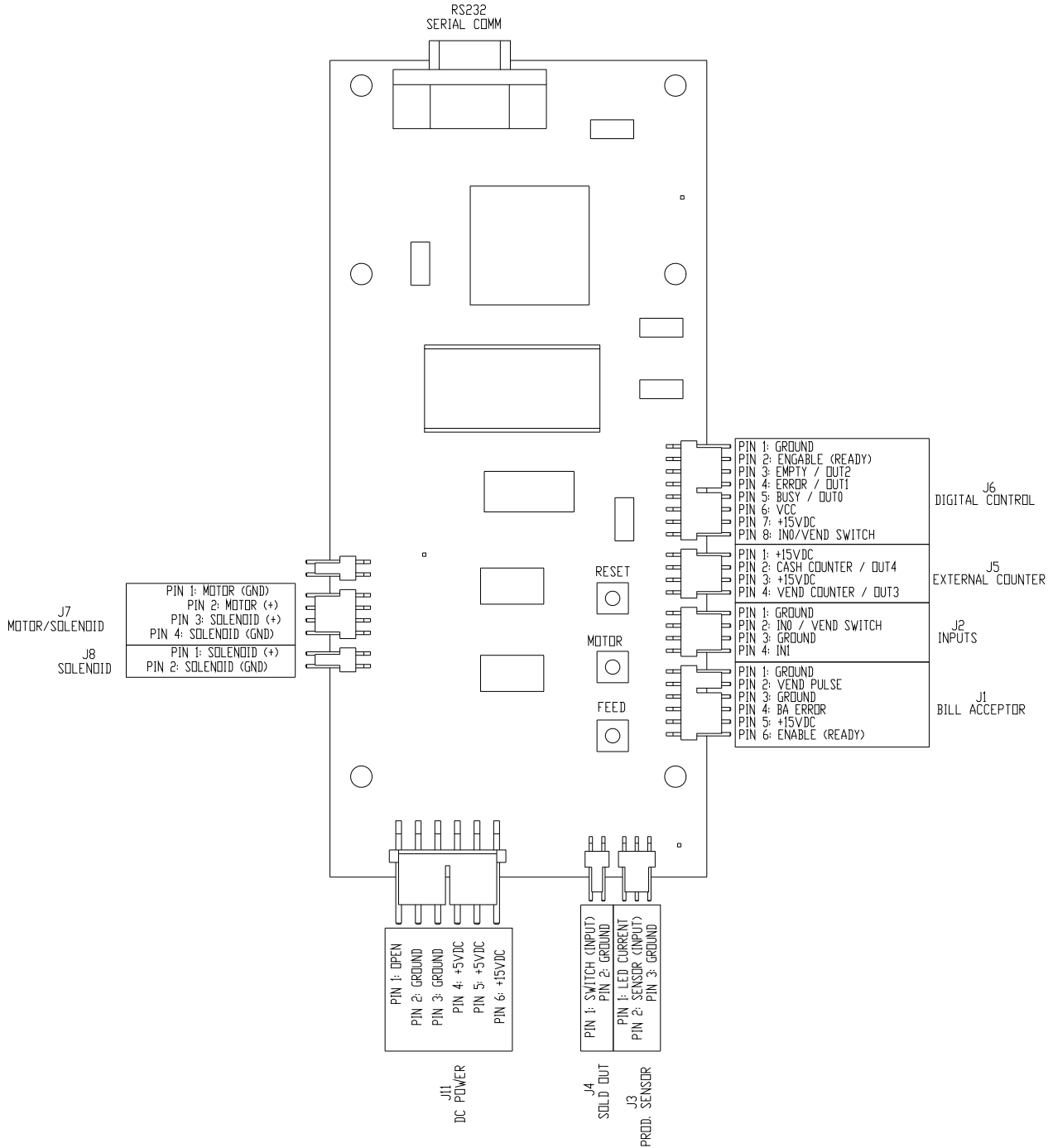
YELLOW
 RED
 BLACK
 OPEN

BROWN
 GREEN
 BLUE

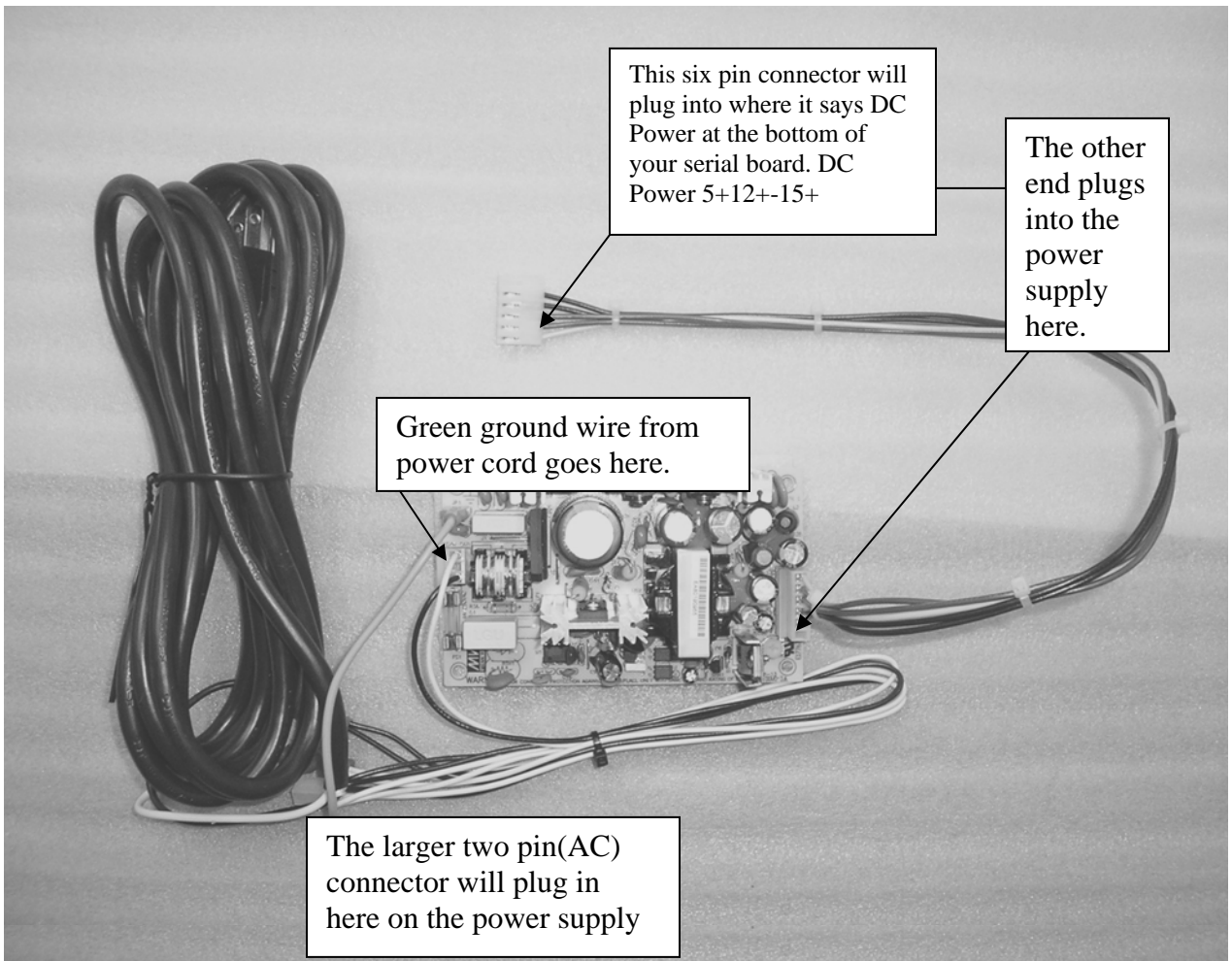
ORANGE
 GREEN
 OPEN
 OPEN
 OPEN

“Combo” Board (serial or digital interface)

The serial command information is available upon request.



65 WATT POWER SUPPLY HOOK-UP



REGULAR MAINTENANCE

Mechanism Lubrication

This should not be necessary. Improper lubrication can result in machine malfunction.

Cleaning

After approximately 100,000 cycles you may need to clean the mechanism. To do this use rubbing alcohol and a cotton rag. Clean the aluminum roller where the cards exit the mechanism. **Do not use alcohol on rubber belts.**

TECHNIK MFG., INC.
1005 17TH STREET
COLUMBUS, NE 68601
1-800-795-8251

SERVICE LOG SHEET

MECHANISM SERIAL NUMBER _____ DATE INSTALLED _____
MECHANISM MODEL TYPE _____ INSTALLED BY _____
BUSINESS LOCATION TYPE _____
BUSINESS ADDRESS _____
CITY/STATE/ZIP _____

<u>DATE</u>	<u>SERVICE PERFORMED</u>	<u>SERVICED BY</u>
_____	_____	_____
_____	_____	_____
_____	_____	_____
_____	_____	_____
_____	_____	_____
_____	_____	_____
_____	_____	_____
_____	_____	_____
_____	_____	_____
_____	_____	_____
_____	_____	_____
_____	_____	_____
_____	_____	_____
_____	_____	_____
_____	_____	_____
_____	_____	_____
_____	_____	_____
_____	_____	_____
_____	_____	_____
_____	_____	_____
_____	_____	_____