

DISPENSING MECHANISMS

SET UP AND OPERATION MANUAL

IM-1CORE/A

OP-IM-1SC

OP-IM-1PT

OP-IM-1BSC

OP-IM-1DEBIT

MECHANISM SERIAL # _____

FIRMWARE OR E-PROM # _____



1005 – 17th Street

Columbus, NE 68601

www.technikmfg.com

Technical Service

800-795-8251

serv@technikmfg.com

Table of Contents

SAFETY CONSIDERATIONS.....	2
UNPACKING.....	2
STANDARD MACHINE PACKING LIST.....	2
MECHANISM MOUNTING	3
IM-SC, IM-PT, IM-1DEBIT, 1BSC	3
CARD THICKNESS ADJUSTMENT PROCEDURE.....	4
LOADING / UNLOADING CARDS.....	5
CONTROL BOARD INFORMATION	6
Combo Board (both serial and parallel).....	6
Parallel Wiring.....	6
Serial Wiring.....	7
Power Supply Hook-up.....	8
REGULAR MAINTENANCE.....	8
SERVICE LOG SHEET	9

SAFETY CONSIDERATIONS

Unplug mechanism when servicing – failure to do this could cause serious injury!

UNPACKING

When the mechanism is received, it should be carefully unpacked and checked closely for any possible damage. If a freight company is involved and there is damage, please notify them immediately. They will need to thoroughly inspect the damage and fill out a report.

Please **do not** touch the mechanism until this has been done.

Please remove and save packing materials for later use.

STANDARD MACHINE PACKING LIST

<u>QUANTITY</u>	<u>DESCRIPTION</u>
1	Mechanism
1	Hex key (side of mechanism)
1	Card weight
1	Card hook
1	Warranty certificate
1	Operation Manual

OPTIONAL EQUIPMENT

Power supply with harnesses – the power supply will plug directly into the mechanism to supply DC power (+5 and +12-15).

Mech Evaluation Kit

USB Cable

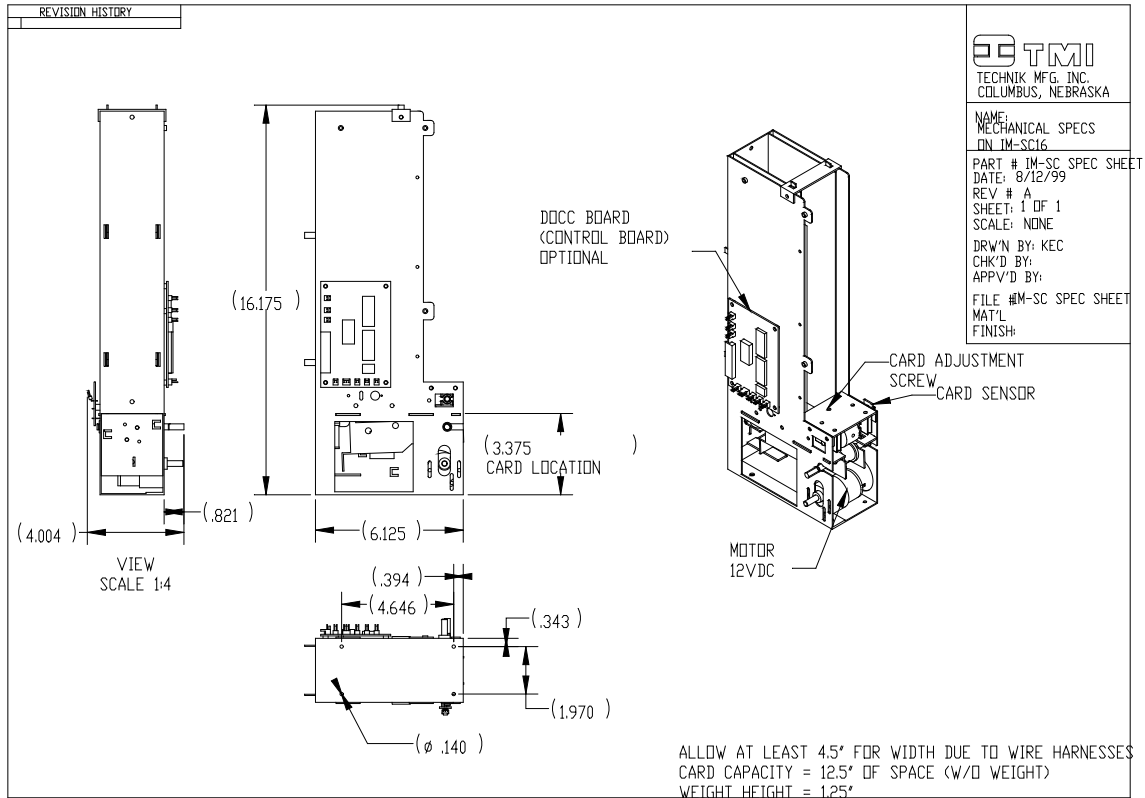
DB9 Cable

Other _____

MECHANISM MOUNTING

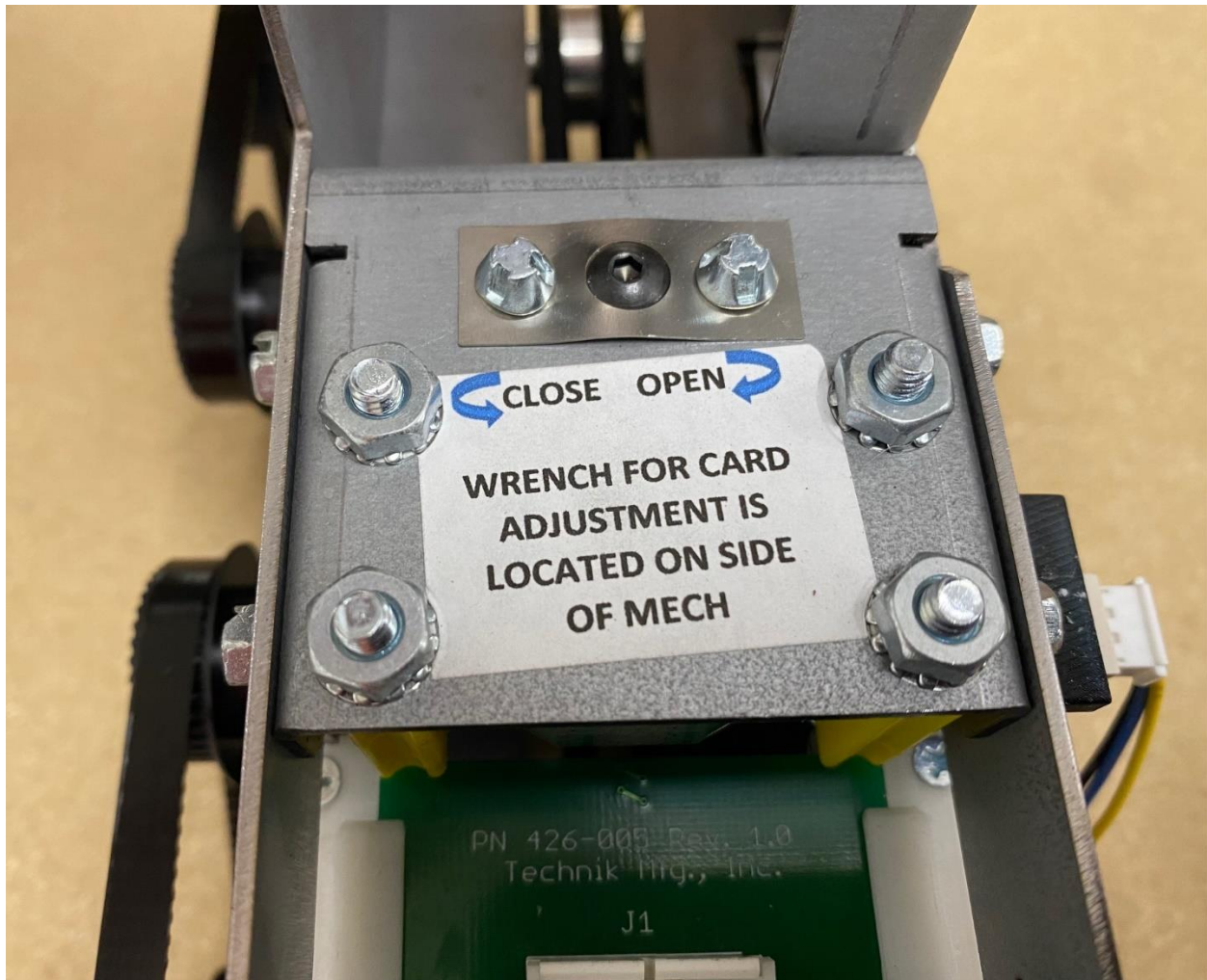
Each mechanism has four holes located at the bottom of the mechanism. Please see drawings below for dimensions. Different models may have different mounting patterns.

IM-SC, IM-PT, IM-1DEBIT, 1BSC



CARD THICKNESS ADJUSTMENT PROCEDURE

1. With a 9/64" hex head wrench, turn the adjustment screw on the dispenser counterclockwise until a card will not pass the adjustment mechanism.
2. Place the supplied calibration card in the bottom of the column.
3. Place the card weight on top of the card with the word "FRONT" facing forward.
4. Place the hex head wrench into the adjustment screw.
5. Try to dispense the card and turn the adjustment screw clockwise until the card is dispensed. It may take a few tries before the card is dispensed smoothly.
6. Once the card is dispensed, the column is properly adjusted.



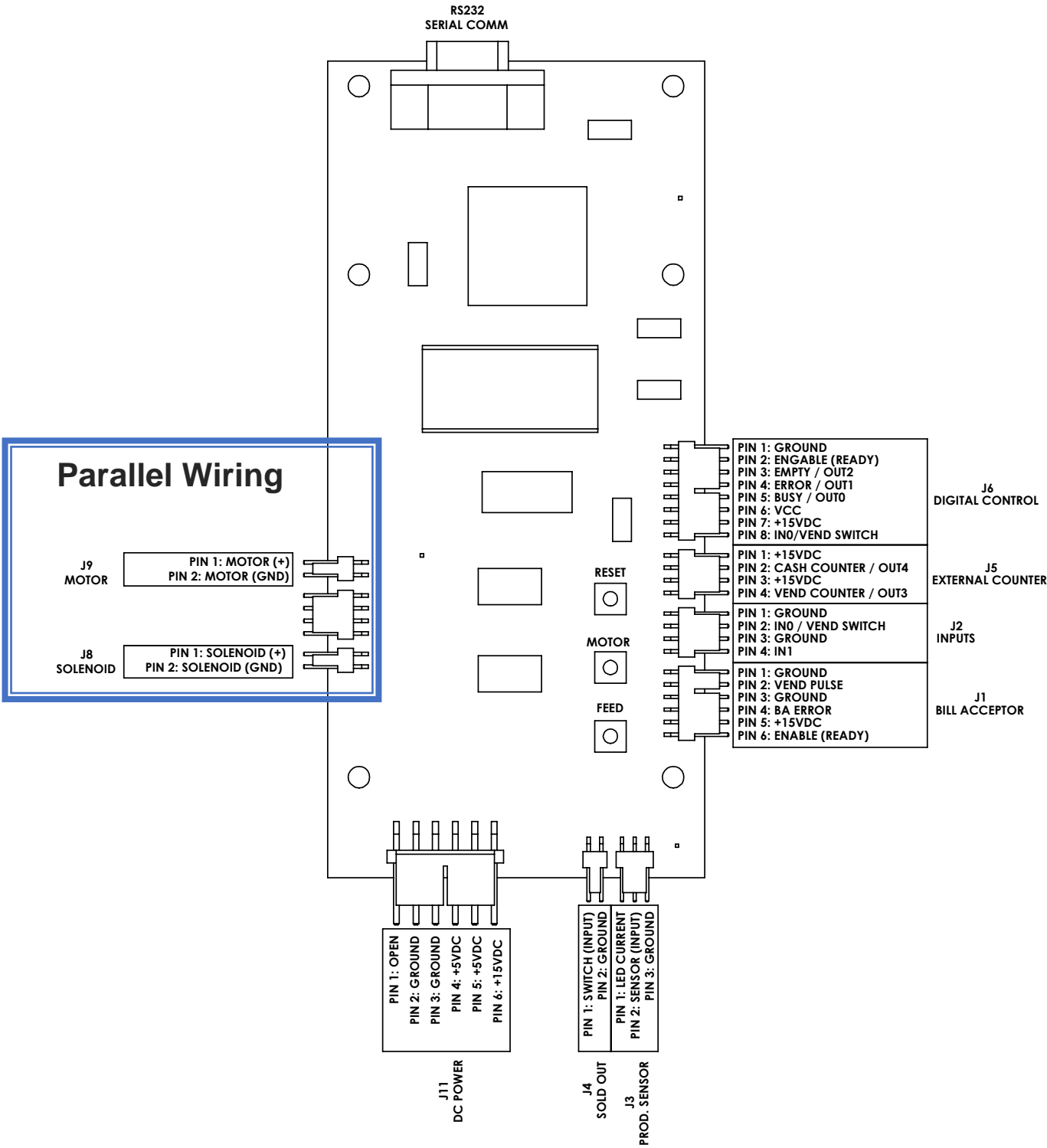
LOADING / UNLOADING CARDS

You are now ready to start loading your cards. Once the cards are in, place a weight on top of the stack. If you receive a weight with knob(s) it should be installed with the knob(s) facing up. If you receive a weight with the word "FRONT" on it you should install it with the word "FRONT" facing you, right side up.

For unloading cards, a card hook is provided that allows for easy removal of the bottom-most cards.

CONTROL BOARD INFORMATION

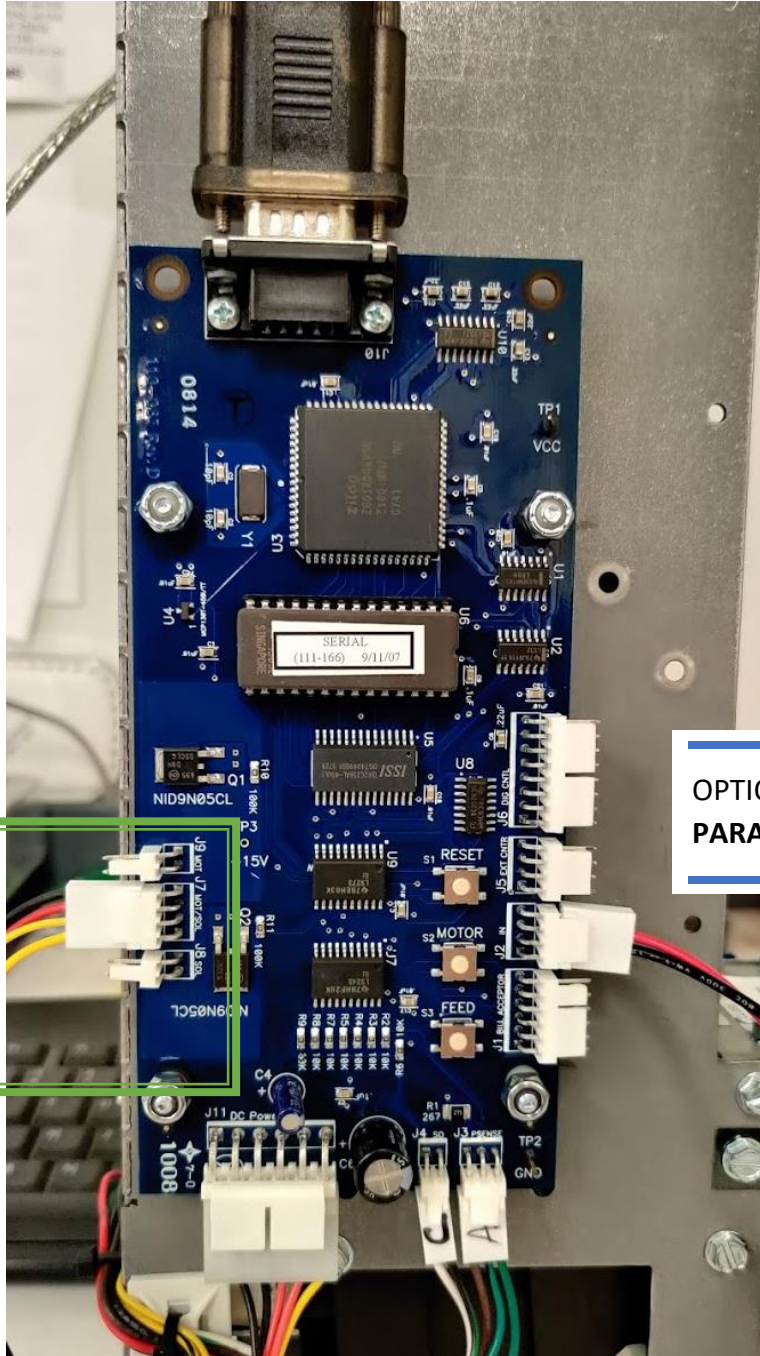
Combo Board (both serial and parallel)



Serial Command Information

The serial command information is located in the “CM Card dispenser interface specification” manual. Please contact Technik for a copy of this manual.

Serial Wiring



**EXTERNAL CONTROL
WIRING**

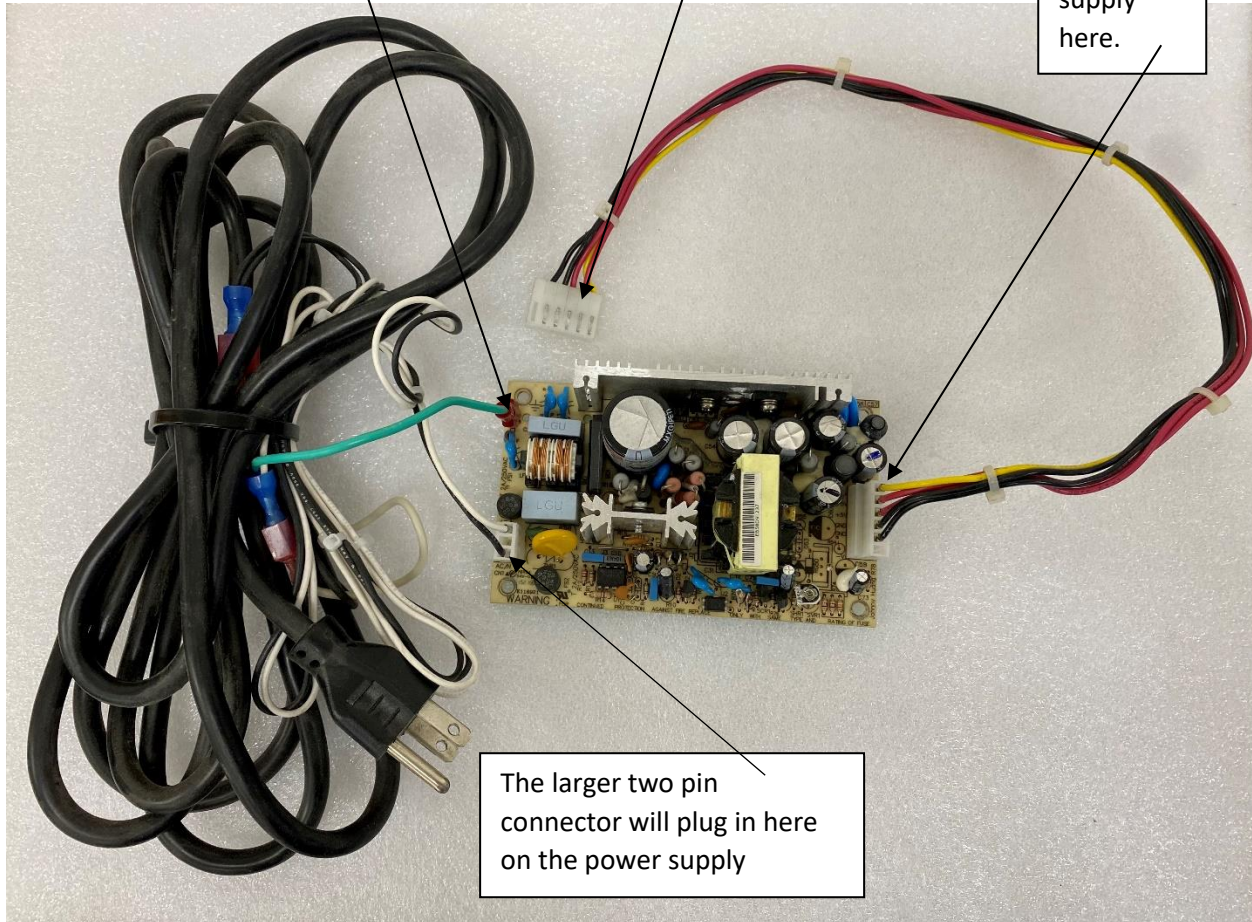
**OPTIONAL EXTERNAL PUSHBUTTON
PARALLEL ONLY**

Power Supply Hook-up

Green ground wire from power cord goes here.

This six-pin connector will plug into where it says DC Power at the bottom of your serial board.

The other end plugs into the power supply here.



The larger two pin connector will plug in here on the power supply

REGULAR MAINTENANCE

Mechanism Lubrication

This should not be necessary. Improper lubrication can result in machine malfunction.

Cleaning After approximately 100,000 cycles you may need to clean the mechanism. To do this use rubbing alcohol and a cotton rag. Clean the aluminum roller where the cards exit the mechanism. **Do not use alcohol on rubber belts.**

